

Features:

- Heavy duty double column distortion free frame
- Detachable base frame with vibration table on anti-vibration mouldings
- Table wear strips and stabilizer bars
- 1,5kW twin shaft vibrator with adjustable weights for vertical directional vibration
- 3m roller conveyer
- 2,2kW hydraulic pallet feeder with pallet magazine
- Pallet size: 608 x 530 x 21mm

Feed silo mounted above Uni with manual discharge gate

V200 Turbine pan mixer

- 3kW 380V geared motor unit mounted below pan mixer
- Hand-lever operated discharge gate
- Pan mixer wall and floor lined with easily replaceable wear segments
- 3-bladed sprung mixing star with inner wall scraper

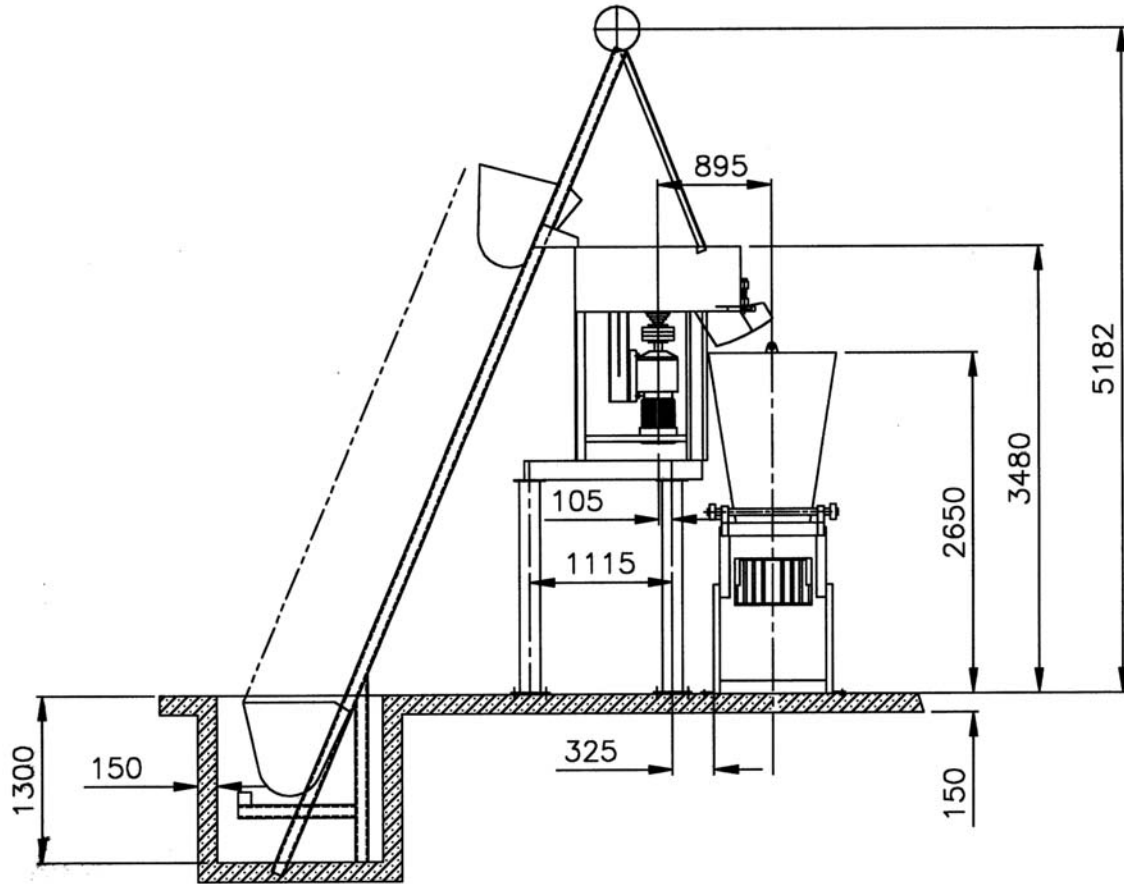
Tilting loader skip

- Mounted to pan mixer
- 3kW geared winch motor unit
- Electro-magnetic break and rope drum
- Upper and lower limit switches and upper emergency limit switch

Switch panel

- Operates loader skip and pan mixer





Layout drawing for Uni Plant

Production Schedule:	Approximate production per 9-hour shift: (with skilled workers)
No. of products per pallet	Up to:
220 x 70 x 100 – 106mm (14 standard bricks)	17 000
200 x 100 x 50 – 60mm (10 chamfer pavers)	10 000
200 x 100, module 60mm high (10 interlock pavers)	10 000
200 x 100, module 80mm high (10 interlock pavers)	10 000
18" x 9" x 9" wide (2 twin cavity blocks)	2 000
18" x 9" x 6" wide (3 twin cavity blocks)	3 000
18" x 9" x 4,5" wide (5 twin cavity blocks)	5 000
390 x 190 x 190mm wide, M200 (3 twin cavity blocks)	3 000
390 x 190 x 140mm wide, M150 (4 twin cavity blocks)	4 000
390 x 190 x 90mm wide, M100 (5 twin cavity blocks)	5 000

NOTE: All equipment is manufactured by PMSA in South Africa. All work carries a 6-month guarantee against faulty material and workmanship. Our professional and experienced technical support team will provide you with the assistance you require; a comprehensive spare parts facility enables immediate dispatch worldwide.